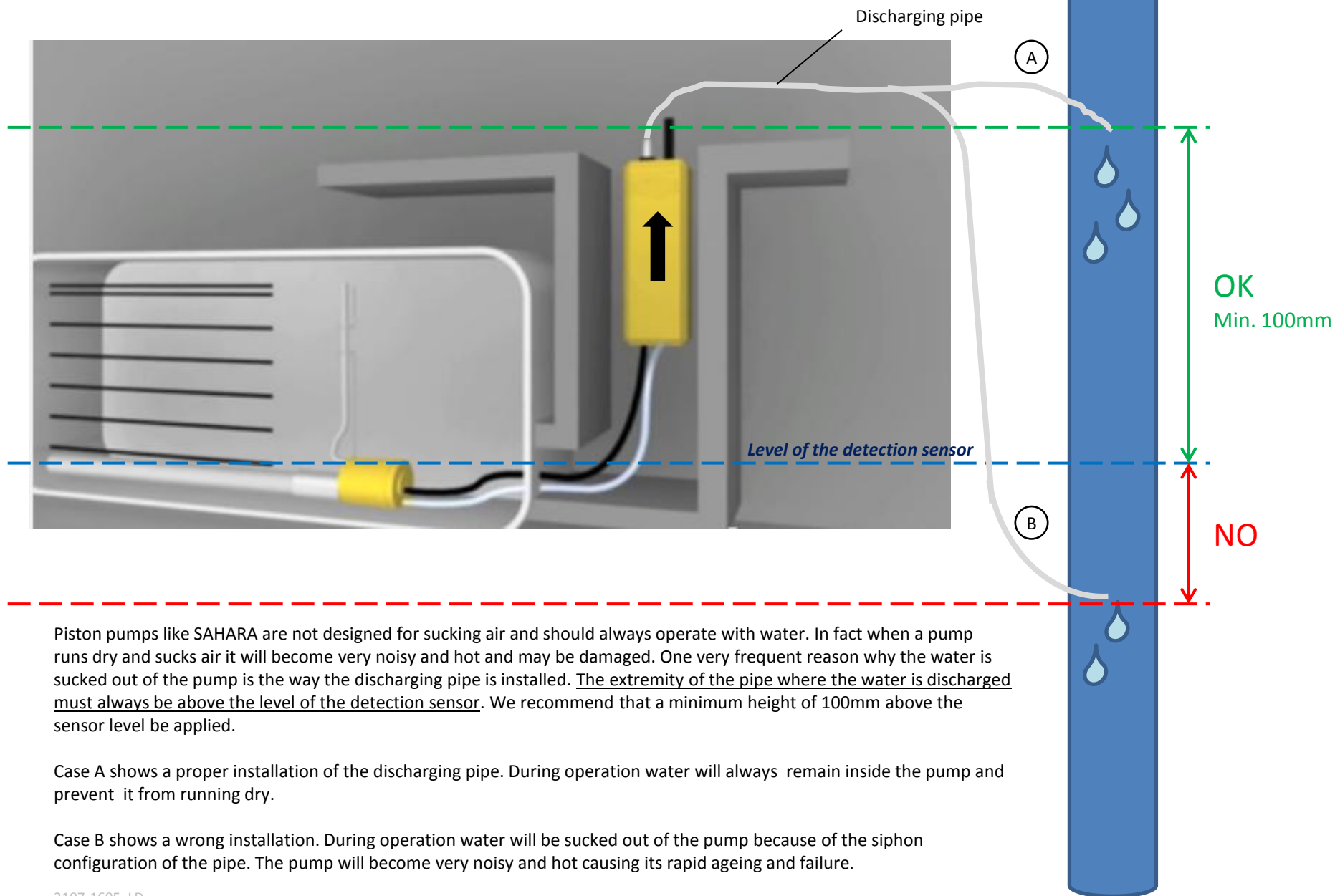


# How to prevent the pump from running dry?



Piston pumps like SAHARA are not designed for sucking air and should always operate with water. In fact when a pump runs dry and sucks air it will become very noisy and hot and may be damaged. One very frequent reason why the water is sucked out of the pump is the way the discharging pipe is installed. The extremity of the pipe where the water is discharged must always be above the level of the detection sensor. We recommend that a minimum height of 100mm above the sensor level be applied.

Case A shows a proper installation of the discharging pipe. During operation water will always remain inside the pump and prevent it from running dry.

Case B shows a wrong installation. During operation water will be sucked out of the pump because of the siphon configuration of the pipe. The pump will become very noisy and hot causing its rapid ageing and failure.